

[View this email in your browser](#)

Welcome to our 1st quarterly issue of CCI News | Keeping you informed



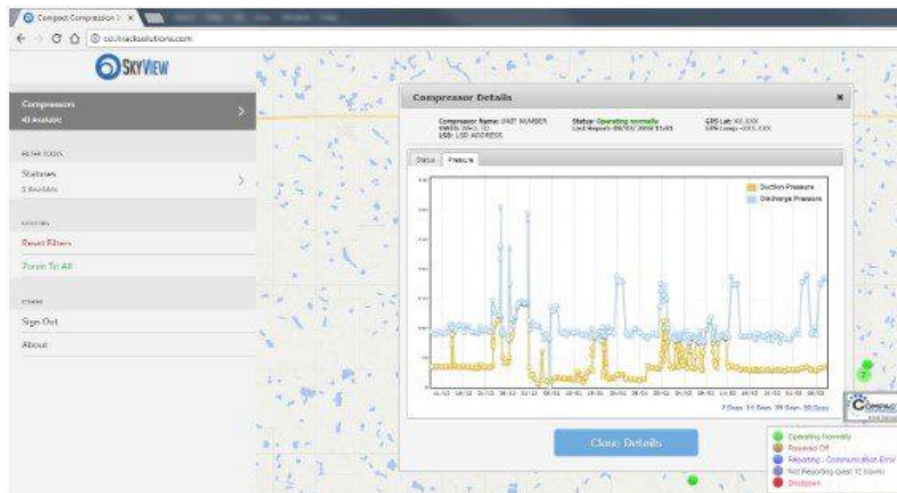
CCI News - Spring 2018

NEWS

SKYVIEW – HCG Operating Data At Your Fingertips

Over the past year, we have developed real-time satellite reporting system. SkyView collects data from HCGs in the field, allowing us to diagnose and avert potential interruptions before they occur, **increasing performance and reducing costs**. Customers on our NHSP (No Hassle Service Plan) have access to SkyView from their computer or mobile device.

- “Real-time” satellite monitoring
- Compressor Status
- Line and Annulus Pressures
- 90-day historical data



[Click to view enlarged image](#)

EQUIPMENT SPOTLIGHT

HCG15 – 15hp Hydraulic Casing Gas Compressor



In production for just over 2½ years, the HCG15 has opened up a new market for casing gas compression. Designed to be utilized with virtually **any artificial lift system: jet pump, PCP, ESP, or pump jack**, the HCG15 maintains optimum casing pressures independent of the lift system via the integrated PLC, reliably and cost effectively.

DID YOU KNOW?

All CCI Hydraulic casing gas compressors **process liquids**, have **no vessels** or **process valves** and were designed with NACE materials to be used in **sour service** with an inexpensive option!

SERVICE

Minimize Downtime, Maximize Savings No Hassle Service Plan (NHSP)

Our core business is casing gas compressors – design, build and service. When we began development of the HCG product line, we realized that in addition to our innovative compression element, an equally new approach to service was necessary, so we created our **all-inclusive fixed cost** service plan, NHSP. One predictable low annual flat fee ensures your HCG will be no hassle for you or your operator and minimize the overall cost of ownership.

- One low annual fixed cost (about **\$10/day**)
- All compressor parts & fluids
- All travel time & mileage in regular service areas
- Product upgrade program
- Real-time “SkyView” satellite reporting

[Read NHSP](#)

MILESTONES



February 16th we shipped out our 400th unit!

OIL SHOW

Redvers & District Oil Show

Redvers, SK - May 30th to 31st, 2018 we will be on exhibition at the Redvers & District Oil Show. Visit our booth and explore one of our HCG models on display.



NEW
WEBSITE
launch in
the coming
weeks

UPGRADES

Driven to **reduce operating costs while increasing performance and reliability**, CCI continues to research, develop and implement product improvements and processes through our product upgrade program. We have broken this down into three main classes: equipment, processes and people. Advancements in each of these groups has led to the overall efficiency in compression services. We have **implemented 74 upgrades into the HCG product line** since its inception in 2015.

EQUIPMENT

Warm-Up Hydraulic Loop – Upgrade PP#32

We designed the HCG hydraulic system to operate at 150°F (65°C). Hydraulic systems often have problems staying cool in hot weather, but the normal inefficiencies generate enough heat to keep fluid warm in cold weather. Our efficient HCGs don't generate enough heat naturally to keep oil at ideal temperatures for cold Canadian winters; complicating the issue is a very large reservoir that is time consuming for the oil to warm up. To minimize the warm up time and ensure the optimal oil temperature, we designed a thermostatically controlled warm up system that directs cold oil through an orifice to generate heat as required. **The benefits – lower oil consumption, less service frequency, and maximum equipment performance.**

PROCESS

Hydraulic Heat Trace – Upgrade CP#22

Connections are installed in all units for the optional Hydraulic Heat Trace. Hydraulic heat trace uses the heat generated in the hydraulic system to prevent freezing, and hydrate formation in the inlet and discharge piping. Compared to the commonly used electrical heat trace, hydraulic heat trace delivers 2.5x the amount of heat per foot with no electrical cost. Electrical panels and controls are completely eliminated. Freeze-up occurrences are virtually eliminated. **The result – significantly less expensive than electrical heat trace to install and no additional cost to operate.**

IN THE NEXT ISSUE

- HCG50 – 50hp HCG, designed for multi-well pads
- Fixed Rate Remote Service
- NHSP (Cost Analysis)
- Sound Attenuation
- Case Studies



Copyright © 2018 Compact Compression Inc., All rights reserved.

Want to change how you receive these emails?
[Update your profile](#) | [Unsubscribe](#) from this list

Grow your business with  mailchimp